



Phoenixville Area High School Space and Security Project Board Presentation

April 20, 2017

ITEMS TO BE DISCUSSED



- Project Scope
- Enrollment Projections
- “Modular” versus “Stick Built” versus “Portables”
- Timeline
- Space Drawings
- Security Drawings

PROJECT SCOPE



Add needed classroom space and upgrade entrance security at PAHS.

1. Six additional classrooms and two small group instructional spaces
2. Create double entry secure entrance to slow intruder and verify identity

HIGH SCHOOL ENROLLMENT PROJECTIONS



Grade	2013	2014	2015	2016	2017	2018	2019	2020	2021	2022	2023	2024	2025	2026
9	279	298	254	238	301	323	301	298	331	314	291	290	302	310
10	254	293	296	259	242	308	330	304	298	331	313	290	290	302
11	250	262	295	292	261	244	308	331	308	300	332	314	291	291
12	221	253	256	287	288	259	242	305	328	305	297	329	311	289
Subtotals:	1,004	1,106	1,101	1,076	1,092	1,134	1,181	1,238	1,265	1,250	1,233	1,223	1,194	1,192
Pct. Chg:		10.2%	-0.5%	-2.3%	1.5%	3.8%	4.1%	4.8%	2.2%	-1.2%	-1.4%	-0.8%	-2.4%	-0.2%
SDC:	0	0	0	0	0	0	0	0	0	0	0	0	0	0
Totals:	1,004	1,106	1,101	1,076	1,092	1,134	1,181	1,238	1,265	1,250	1,233	1,223	1,194	1,192
85% of capacity	1,049	1,049	1,049	1,049	1,049	1,049	1,049	1,049	1,049	1,049	1,049	1,049	1,049	1,049
Over (Under) 85%	-45	57	52	27	43	85	132	189	216	201	184	174	145	143
Capacity:	1,234	1,234	1,234	1,234	1,234	1,234	1,234	1,234	1,234	1,234	1,234	1,234	1,234	1,234
Open Seats:	230	128	133	158	142	100	53	-4	-31	-16	1	11	40	42

MODULAR VERSUS STICK BUILT VERSUS PORTABLES



- **Modulars**-Long life structures (40+ years) built off site at a factory and large sections are assembled on site. Advantage is speed of construction and possible lower cost. Commonly used, especially for small additions to existing buildings where there is a small time window for construction, June to September. Also used in health care.
- http://www.modular.org/htmlPage.aspx?name=Market_Education
- **Stick Built**-Long life traditional construction with sequential activities completed by trades
- **Portables**-Temporary classrooms (7 years or less) built on trailers that can be moved from site to site for short term needs until a permanent solution is put in place.

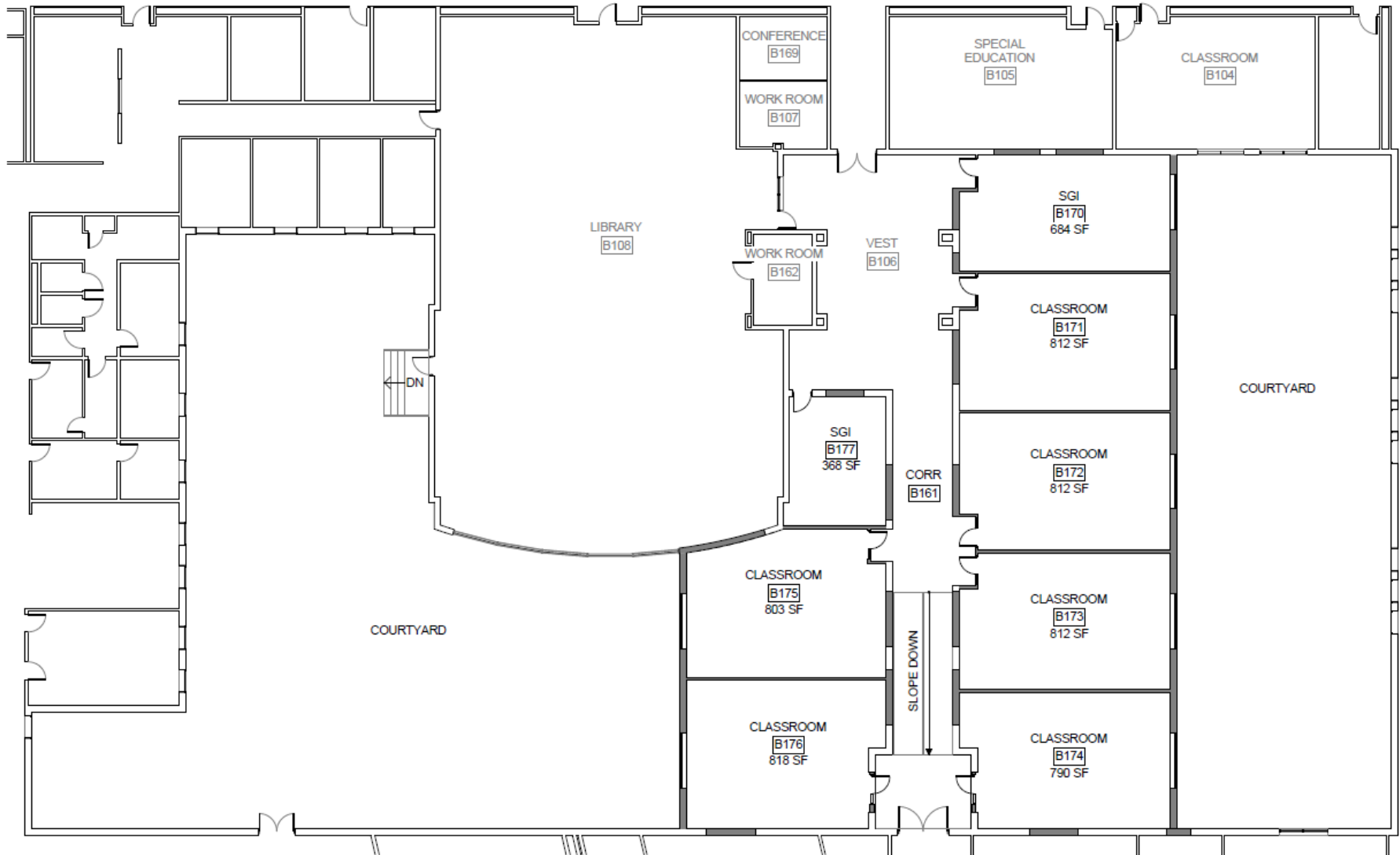
DISCUSSION TIMELINE-11/15 TO 4/17-18 MONTHS



- Space and Security Discussions at Board Building and Grounds Committee Meetings
 - 11/16/15-reviewed preliminary space addition drawings
 - 12/14/15-preliminary architects budget estimate
 - 1/15/16-space utilization data at PAHS reviewed
 - 9/19/16-revised drawings for Space and Security reviewed
 - 11/16/16-continued discussion
 - 12/12/16-updated enrollment projections discussed
 - 1/17/17-architects fee for next phase discussed
 - 1/31/17-project manager fee for project discussed
 - 2/18/17-continued discussion
 - 3/20/17-continued discussion
 - 4/4/17-Board direction received for option 5 for security

- Space and Security Discussions at Board Workshops and Meetings
 - After each B&G meeting, it has been discussed at workshop meeting and voting items (Architect's fees, Project Manager fees) have been voted on.

SPACE DRAWINGS



FIRST FLOOR

SECURITY DRAWINGS



SCHRADERGROUP
Architecture, LLC
 Architecture | Planning | Programming
 181 Leanington Ave
 Suite 102
 Phoenixville, PA 19373
 t 610 483 7940
 f 610 483 7441
 www.sgr.com

Consultants:
 Civil Engineer

 MEP Engineer

 Architect/Engineer
 Structural

Professional Seal:

Owner:
 Phoenixville Area School District
 Owner Address

New Construction of
PHOENIXVILLE AREA
HIGH SCHOOL -
SECURE ENTRY
 1200 Gay St.
 Phoenixville, PA 19400

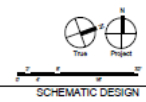
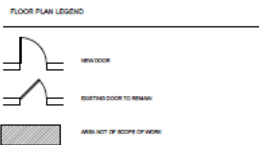
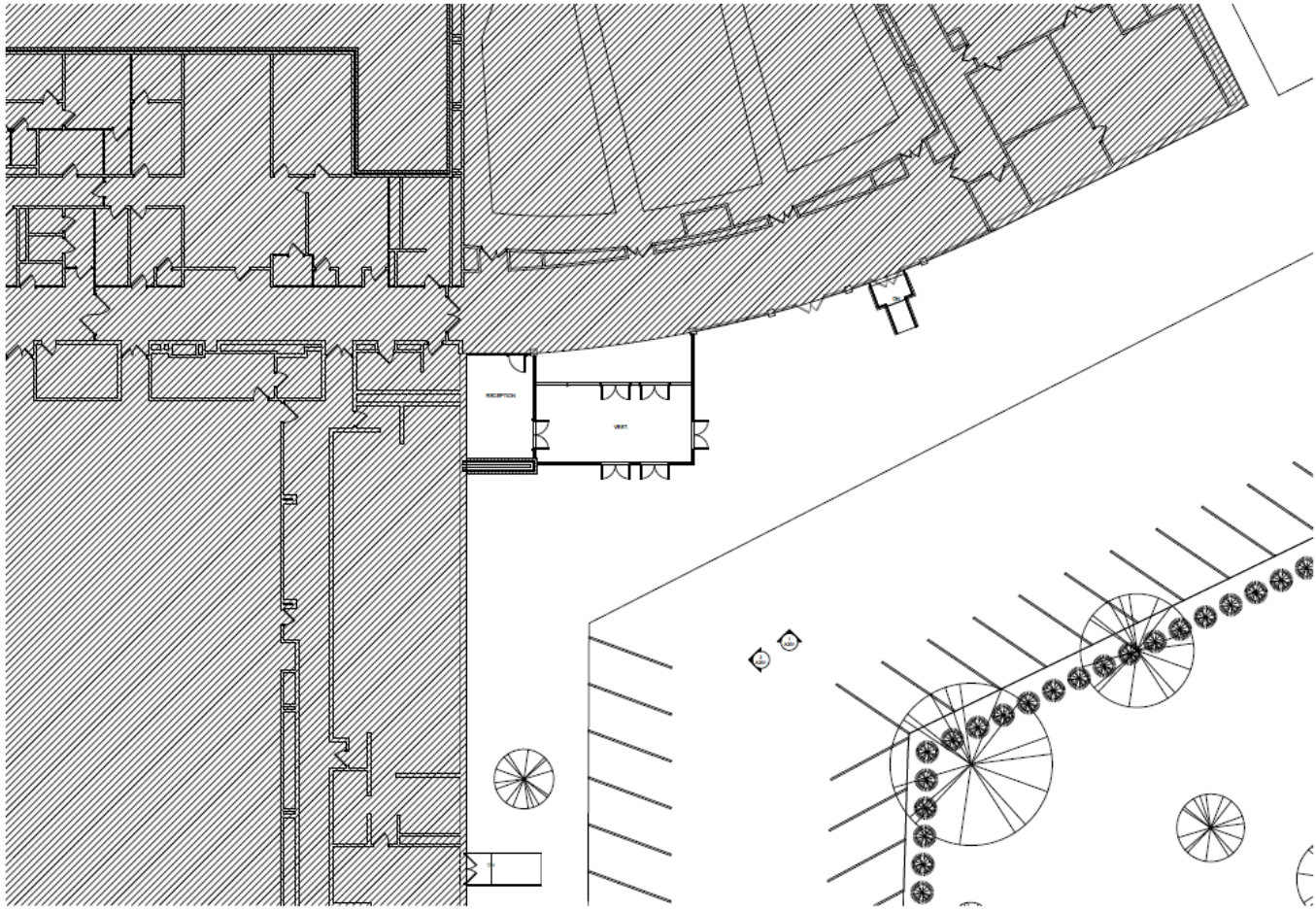
ISSUED FOR:	DATE

DATE: Apr. 04, 2018
 SGM PROJECT NUMBER:

Key Plan:

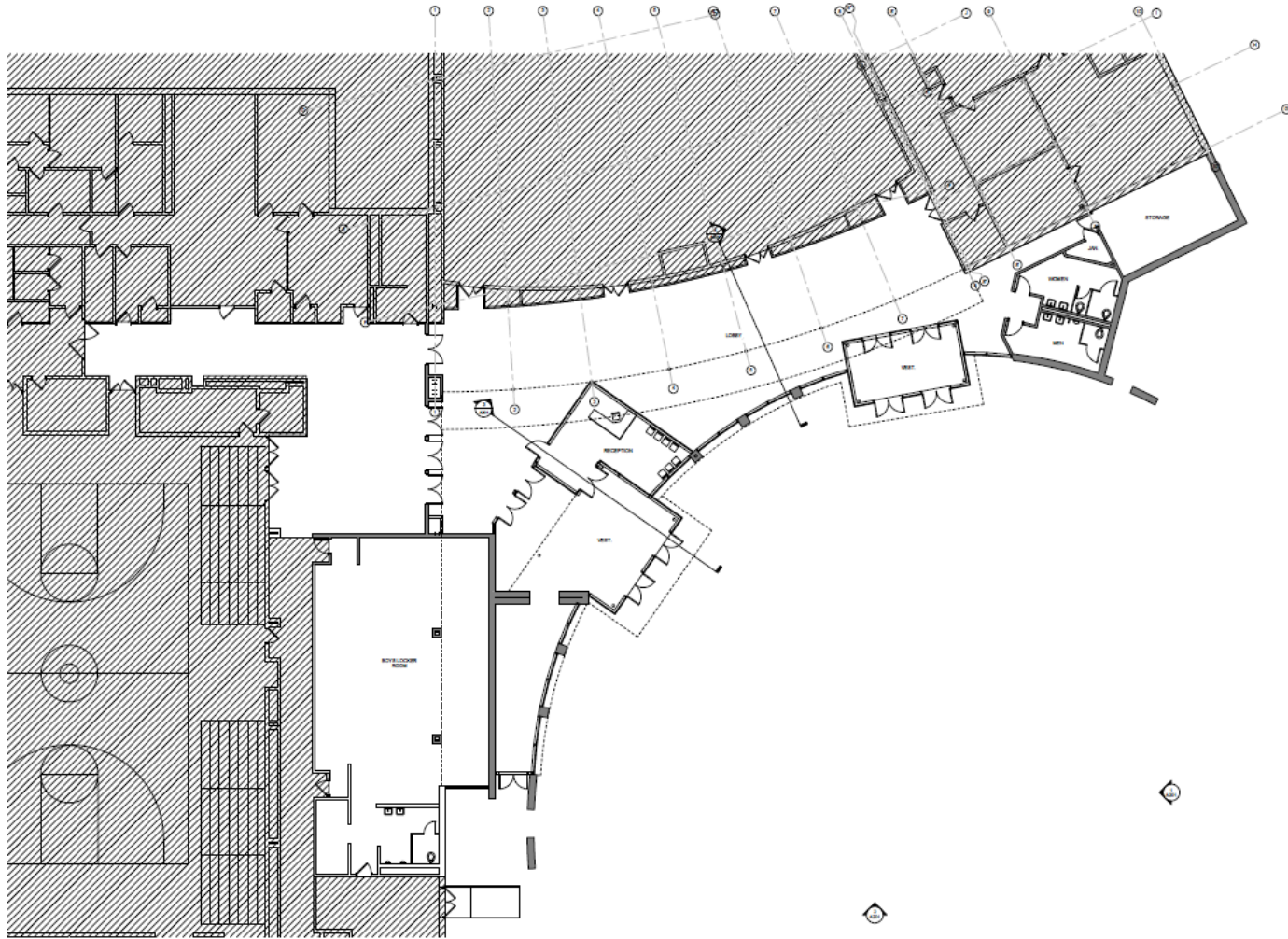
Drawing Title:
 FLOOR PLAN

Drawing Number:
 A101



SCHEMATIC DESIGN

SECURITY DRAWINGS



FIRST FLOOR PLAN
SCALE: 1/8" = 1'-0"



SCHRADERGROUP
Architecture, LLC

Architecture | Planning | Programming
125 Leaning Tower Ave
Suite 105
Phoenixville, PA 19377
P: 215 482 7440
F: 215 482 7440
www.sgrgroup.com

Consultant:

Project/Owner:
SCHRADERGROUP Architecture
Address:
Contact:

Professional Seal:

Owner:
Phoenixville Area School District
Owner Address:

Additions and Renovations to:
PHOENIXVILLE AREA HIGH SCHOOL - HIGH SCHOOL ENTRY SECURE ENTRY
11100 Garp St
Phoenixville, PA 19380

Legend Table:

NO.	DESCRIPTION	DATE

DATE: Feb. 26, 2018
SQA PROJECT NUMBER:

Key Plan:

Drawing Title:
FIRST FLOOR PLAN

Drawing Number:
A101

